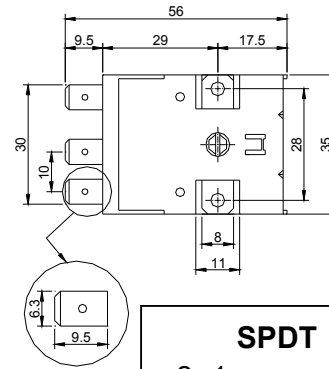
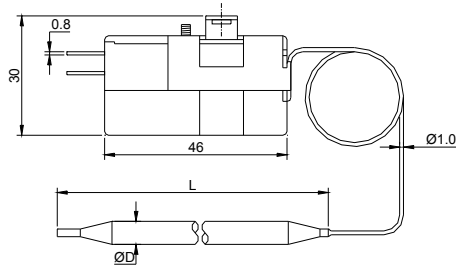
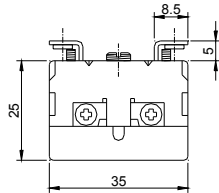


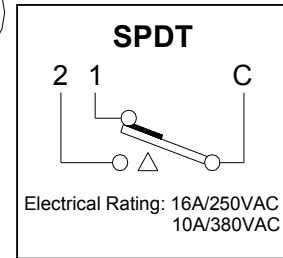


Rainbow

TS Series – FIXED TEMP. AUTO RESET THERMOSTATS (NON-ADJUSTABLE)



Maximum Body Temperature: 150°C
Electric Rating: 16A/250VAC, 10A/380VAC
Switch Circuitry: Single pole double throw (SPDT)
Mounting: Standard M4 mounting brackets (28mm center to center)
Terminal Type: 45°, 90°, Straight



Part No.	Temp. Range (°C)	Sensor Size		Capillary Length (mm)	Stuffing Bolt
		Ø (mm)	L (mm)		
TS-090SF(1M)	0 ~ 90	5	104	1000	No
TS-200SF(1M)	0 ~ 200	5	60	1000	No